



型号/MODEL: KM8501

重量/WEIGHT
11g(不含镜片)

材质/MATERIAL
钛/TITANIUM

镜宽/LENS WIDTH
52MM

鼻间距/BRIDGE WIDTH
17MM

镜腿长/TEMPLE LENGTH
148MM



C1 深茶 / 哑玫瑰金
Dark Brown / Matte Rose Gold



C2 深灰 / 哑深枪
Dark Grey
Matte Dark Gun



C3 灰紫 / 哑银
Greyish Purple / Matte Silver



C4 中茶 / 哑深咖
Medium Brown
Matte Dark Coffee



C5 亮黑 / 哑浅枪
Gloss Black / Matte Light Gun



C6 亮黑 / 哑深红
Gloss Black
Matte Dark Red



型号/MODEL: KM8502

重量/WEIGHT
11g(不含镜片)

材质/MATERIAL
钛/TITANIUM

镜宽/LENS WIDTH
53MM

鼻间距/BRIDGE WIDTH
18MM

镜腿长/TEMPLE LENGTH
150MM



C1 深茶 / 哑金
Dark Brown / Matte Gold



C2 深灰 / 哑珠光深枪
Dark Grey
Matte Pearlescent Dark Gun



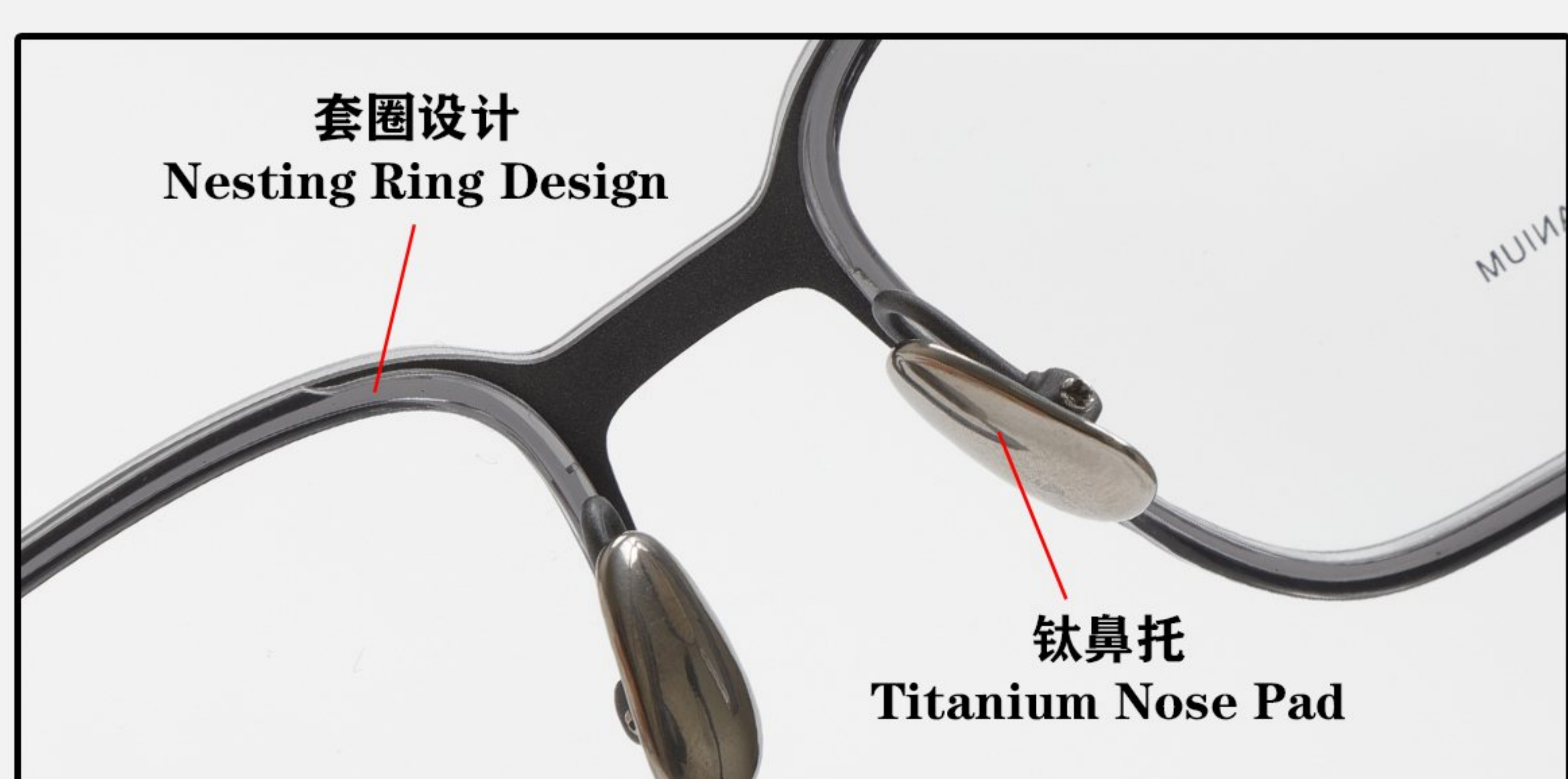
C3 亮黑 / 哑银
Gloss Black / Matte Silver



C4 中茶 / 哑深咖
Medium Brown
Matte Dark Coffee



C6 亮黑 / 哑珠光深蓝
Gloss Black / Matte Pearlescent Dark Blue



型号/MODEL: KM8503

重量/WEIGHT
12g(不含镜片)

材质/MATERIAL
钛/TITANIUM

镜宽/LENS WIDTH
54MM

鼻间距/BRIDGE WIDTH
19MM

镜腿长/TEMPLE LENGTH
150MM



C1 深茶 / 哑玫瑰金
Dark Brown / Matte Rose Gold



C2 灰紫 / 哑深枪
Greyish Purple
Matte Dark Gun



C3 亮黑 / 哑银
Gloss Black / Matte Silver



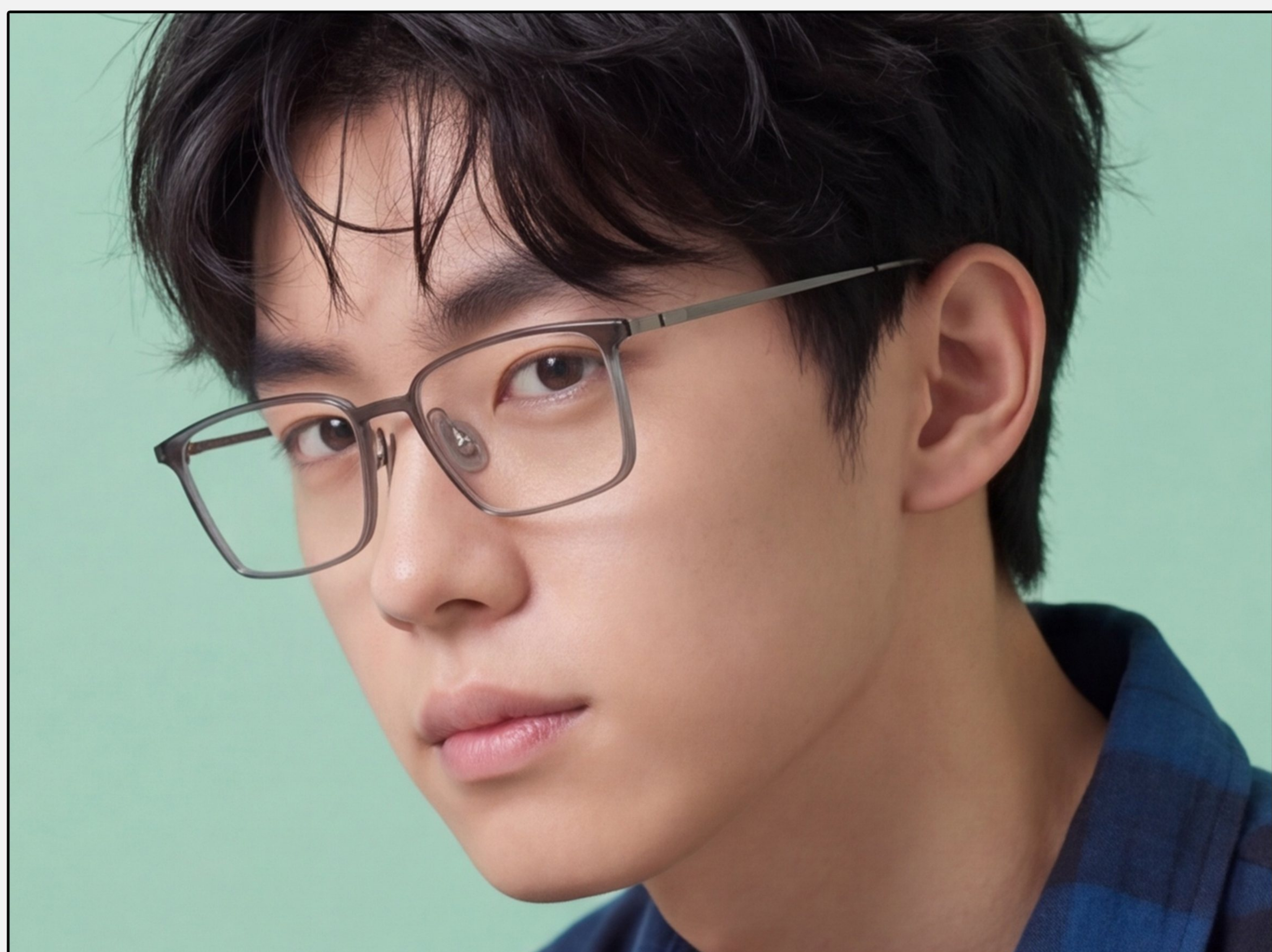
C4 中茶 / 哑深咖
Medium Brown
Matte Dark Coffee



C5 绿 / 哑浅枪
Green / Matte Light Gun



C6 亮黑 / 哑深蓝
Gloss Black
Matte Dark Blue



型号/MODEL: KM8505

重量/WEIGHT
12g(不含镜片)

材质/MATERIAL
钛/TITANIUM

镜宽/LENS WIDTH
55MM

鼻间距/BRIDGE WIDTH
17MM

镜腿长/TEMPLE LENGTH
152MM



C1 亮黑/哑金
Gloss Black / Matte Gold



C2 亮黑/哑深枪
Gloss Black
Matte Dark Gun



C3 深茶/哑银
Dark Brown / Matte Silver



C4 中茶/哑深咖
Medium Brown
Matte Dark Coffee



C5 深灰/哑浅枪
Dark Grey / Matte Light Gun



C6 深灰/哑深蓝
Dark Grey
Matte Dark Blue



型号/MODEL: KM8506

重量/WEIGHT
12g(不含镜片)

材质/MATERIAL
钛/TITANIUM

镜宽/LENS WIDTH
54MM

鼻间距/BRIDGE WIDTH
18MM

镜腿长/TEMPLE LENGTH
150MM



C1 深茶/哑玫瑰金
Dark Brown / Matte Rose Gold



C2 亮黑/哑深枪
Gloss Black
Matte Dark Gun



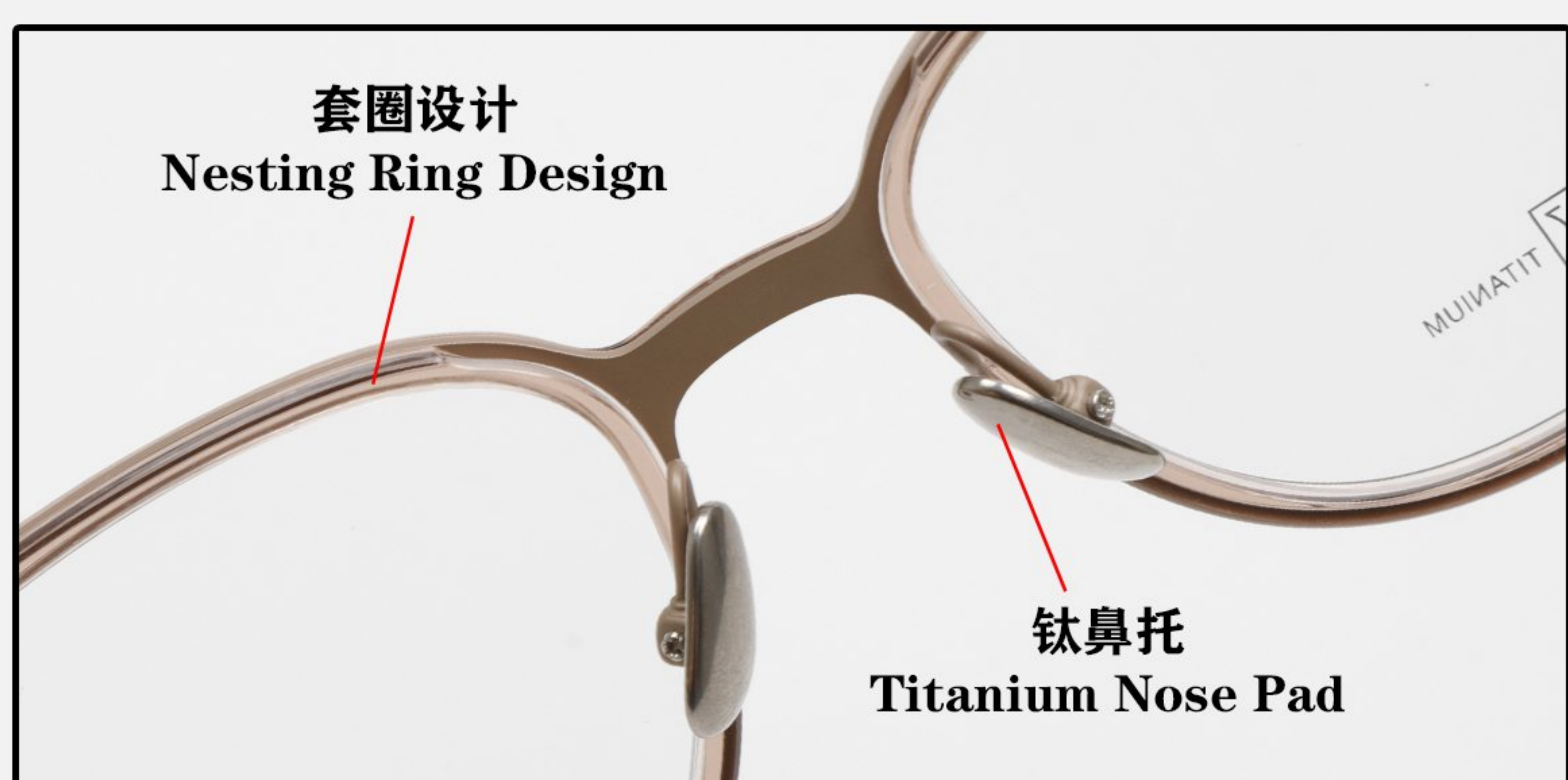
C3 灰紫/哑银
Greyish Purple / Matte Silver



C5 浅灰/哑浅枪
Light Grey
Matte Light Gun



C6 绿/哑银
Green / Matte Silver



型号/MODEL: KM8507

重量/WEIGHT
12g(不含镜片)

材质/MATERIAL
钛/TITANIUM

镜宽/LENS WIDTH
53MM

鼻间距/BRIDGE WIDTH
18MM

镜腿长/TEMPLE LENGTH
148MM



C1 亮黑 / 哑玫瑰金
Gloss Black / Matte Rose Gold



C2 深灰 / 哑深枪
Dark Grey
Matte Dark Gun



C3 绿 / 哑银
Green / Matte Silver



C4 中茶 / 哑玫瑰金
Medium Brown
Matte Rose Gold



C5 灰紫 / 哑浅枪
Greyish Purple / Matte Light Gun



C6 亮黑 / 哑深红
Gloss Black
Matte Dark Red



型号/MODEL: KM8508

重量/WEIGHT
13g(不含镜片)

材质/MATERIAL
钛/TITANIUM

镜宽/LENS WIDTH
57MM

鼻间距/BRIDGE WIDTH
17MM

镜腿长/TEMPLE LENGTH
152MM



C1 亮黑/哑金
Gloss Black / Matte Gold



C2 亮黑/哑深枪
Gloss Black
Matte Dark Gun



C3 深茶/哑银
Dark Brown / Matte Silver



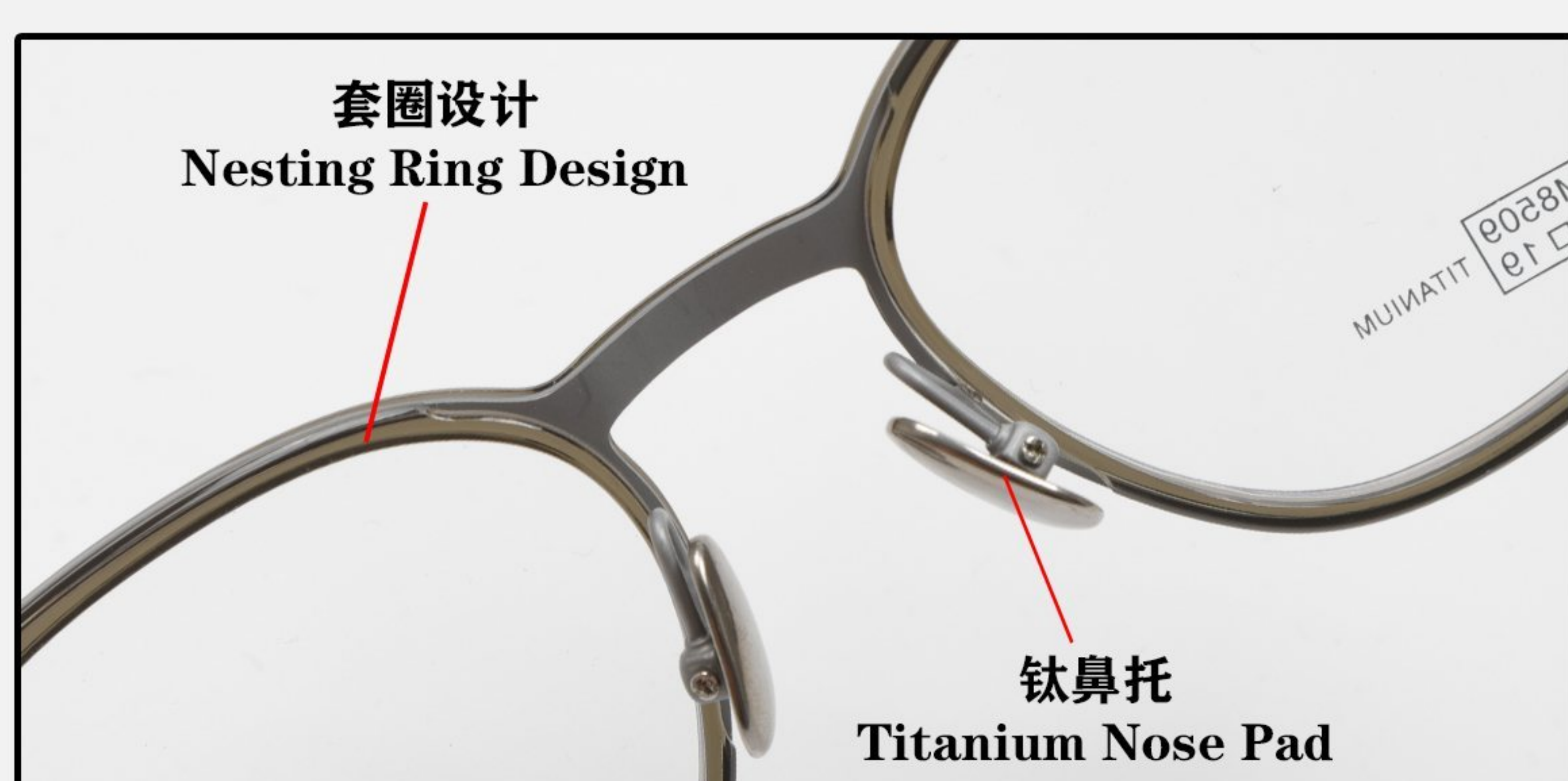
C4 中茶/哑深咖
Medium Brown
Matte Dark Coffee



C5 深灰/哑浅枪
Dark Grey / Matte Light Gun



C6 深灰/哑深蓝
Dark Grey
Matte Dark Blue



型号/MODEL: KM8509

重量/WEIGHT
12g(不含镜片)

材质/MATERIAL
钛/TITANIUM

镜宽/LENS WIDTH
52MM

鼻间距/BRIDGE WIDTH
19MM

镜腿长/TEMPLE LENGTH
150MM



C1 灰紫/哑深枪
Greyish Purple / Matte Dark Gun



C2 绿/哑银
Green / Matte Silver



C3 中茶/哑深咖
Medium Brown / Matte Dark Coffee



C4 亮黑/哑珠光绿
Gloss Black
Matte Pearlescent Green



型号/MODEL: KM8510

重量/WEIGHT
12g(不含镜片)

材质/MATERIAL
钛/TITANIUM

镜宽/LENS WIDTH
54MM

鼻间距/BRIDGE WIDTH
19MM

镜腿长/TEMPLE LENGTH
150MM



C1 亮黑/哑玫瑰金
Gloss Black / Matte Rose Gold



C2 中茶/哑深枪
Medium Brown
Matte Dark Gun



C3 灰紫/哑银
Greyish Purple / Matte Silver



C4 绿/哑珠光绿
Green
Matte Pearlescent Green



C6 亮黑/哑深红
Gloss Black / Matte Dark Red



型号/MODEL: KM8511

重量/WEIGHT
12g(不含镜片)

材质/MATERIAL
钛/TITANIUM

镜宽/LENS WIDTH
50MM

鼻间距/BRIDGE WIDTH
18MM

镜腿长/TEMPLE LENGTH
148MM



C1 亮黑/哑玫瑰金
Gloss Black / Matte Rose Gold



C2 中茶/哑深枪
Medium Brown
Matte Dark Gun



C3 灰紫/哑银
Greyish Purple / Matte Silver



C4 绿/哑珠光绿
Green
Matte Pearlescent Green



C6 亮黑/哑深红
Gloss Black / Matte Dark Red



型号/MODEL: KM8512

重量/WEIGHT
13g(不含镜片)

材质/MATERIAL
钛/TITANIUM

镜宽/LENS WIDTH
51MM

鼻间距/BRIDGE WIDTH
19MM

镜腿长/TEMPLE LENGTH
148MM



C1 浅灰 / 哑玫瑰金
Light Grey / Matte Rose Gold



C2 灰紫 / 哑深枪
Greyish Purple
Matte Dark Gun



C3 绿 / 哑银
Green / Matte Silver



C4 中茶 / 哑深咖
Medium Brown
Matte Dark Coffee



C5 亮黑 / 哑浅枪
Gloss Black / Matte Light Gun



C6 亮黑 / 哑珠光绿
Gloss Black
Matte Pearlescent Green



型号/MODEL: KM8515

重量/WEIGHT
12g(不含镜片)

材质/MATERIAL
钛/TITANIUM

镜宽/LENS WIDTH
53MM

鼻间距/BRIDGE WIDTH
18MM

镜腿长/TEMPLE LENGTH
150MM



C1 深茶 / 哑金
Dark Brown / Matte Gold



C2 深灰 / 哑珠光深枪
Dark Grey
Matte Pearlescent Dark Gun



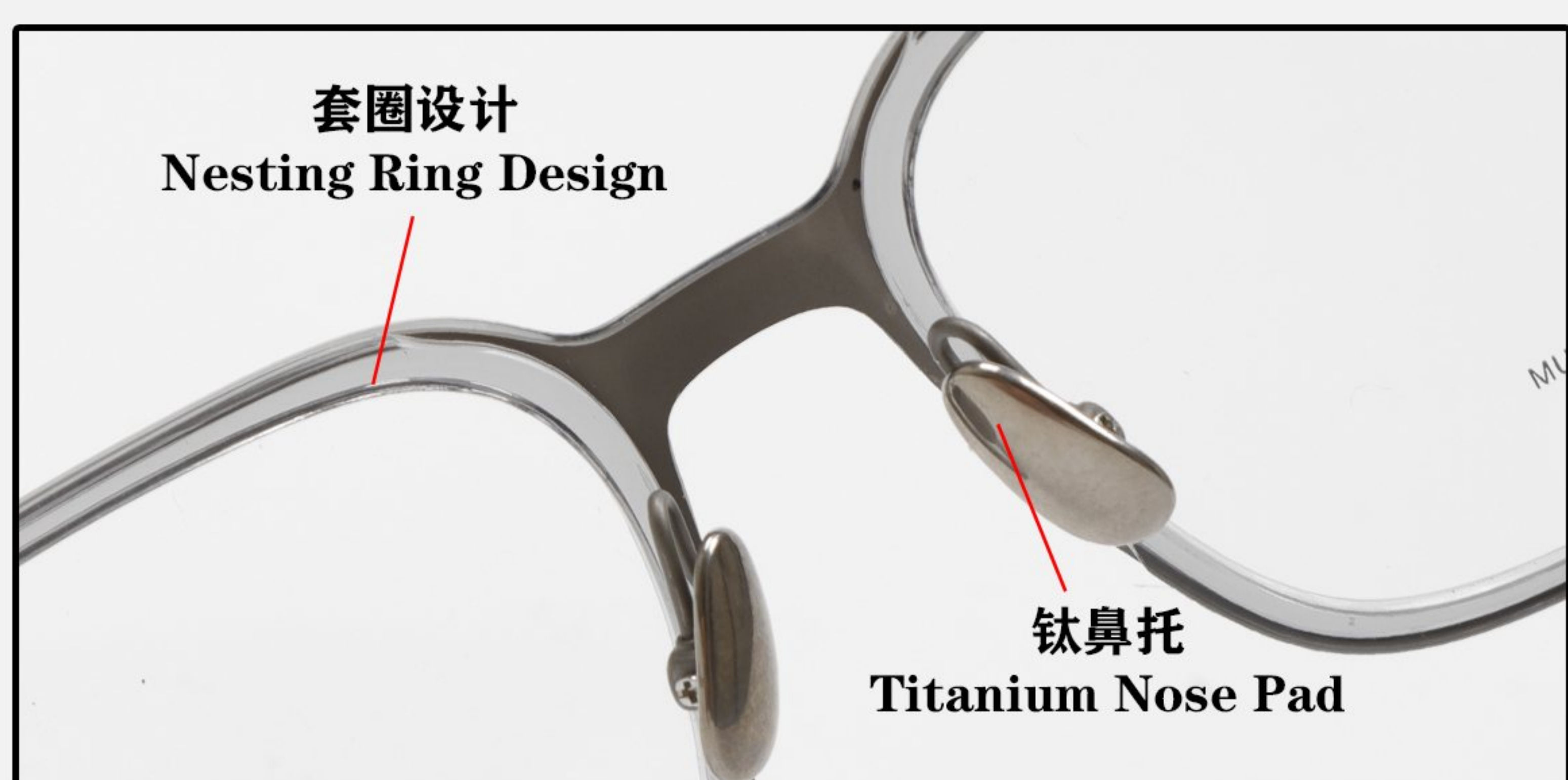
C3 亮黑 / 哑银
Gloss Black / Matte Silver



C4 中茶 / 哑深咖
Medium Brown
Matte Dark Coffee



C6 亮黑 / 哑珠光深蓝
Gloss Black / Matte Pearlescent Dark Blue



型号/MODEL: KM8516

重量/WEIGHT
13g(不含镜片)

材质/MATERIAL
钛/TITANIUM

镜宽/LENS WIDTH
56MM

鼻间距/BRIDGE WIDTH
18MM

镜腿长/TEMPLE LENGTH
152MM



C1 深茶 / 哑金
Dark Brown / Matte Gold



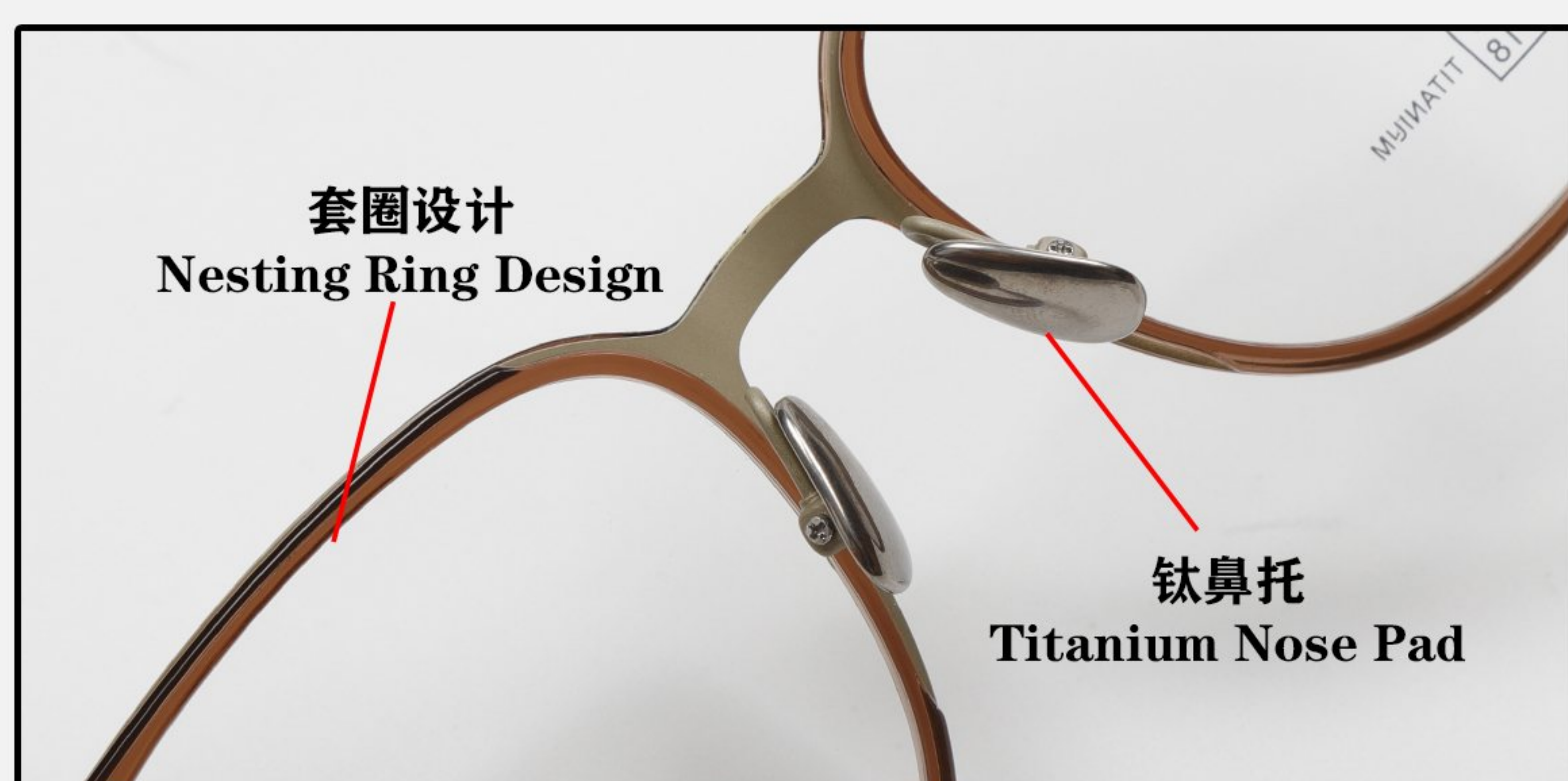
C2 深灰 / 哑深枪
Dark Grey
Matte Dark Gun



C3 亮黑 / 哑银
Gloss Black / Matte Silver



C5 浅灰 / 哑深枪
Light Grey
Matte Dark Gun



型号/MODEL: KM8517

重量/WEIGHT
13g(不含镜片)

材质/MATERIAL
钛/TITANIUM

镜宽/LENS WIDTH
54MM

鼻间距/BRIDGE WIDTH
18MM

镜腿长/TEMPLE LENGTH
148MM



C1 深茶/哑玫瑰金
Deep Tea / Matte Rose Gold



C2 深灰/哑深枪
Dark Gray
Matte Dark Gun



C3 灰紫/哑银
Grayish Purple / Matte Silver



C4 绿/半光哑咖
Green
Satin-Matte Coffee Brown



C5 黑/哑浅枪
Black / Matte Light Gun



C6 中茶/哑珠光绿
Medium Tea
Matte Pearlescent Green